



“Maximus” Magazine Follower for SW22

V1.0 [www.tandemkross.com](http://www.tandemkross.com)

For more info or support contact

[CustomerService@tandemkross.com](mailto:CustomerService@tandemkross.com)

**Attention:**

**Before you begin, be certain that the firearm is clear and safe.**

*It is recommended to wear safety glasses as some parts are under spring tension.*

**Included in Package: Two (2) “Maximus” Followers.**

**You will need a punch or pick and an EMPTY Smith and Wesson Victory magazine.**

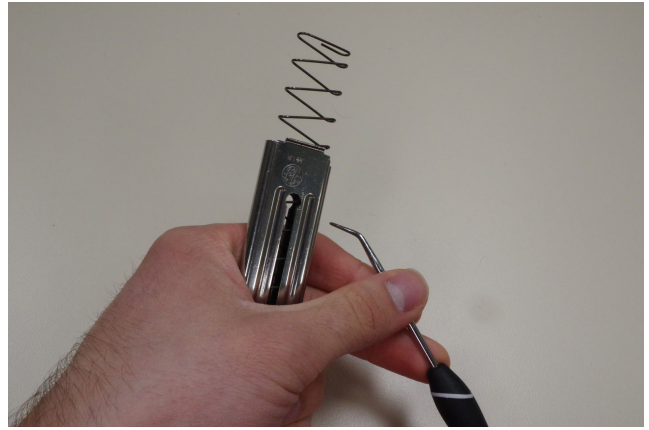
1. To begin, hold the magazine upside down, with the base pad pointing up. Insert the pick in between the coils of the spring and pull down, compressing the spring towards the follower.



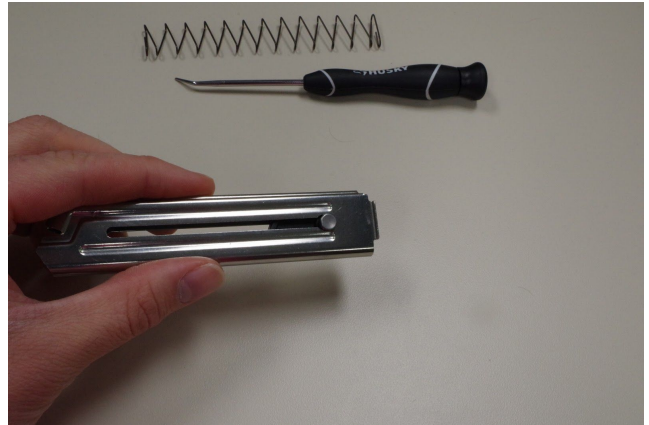
2. Slide the base pad off the end of the magazine and set it aside.



- Carefully pull the pick out of the spring coils. Be sure to hold a hand over the end of the magazine so that the spring can't go flying. Completely remove the spring from the magazine.



- Slide the follower down to the bottom of the magazine and remove the follower button. It may fall out by itself. If not, use the pick to push it out from the opposite side.



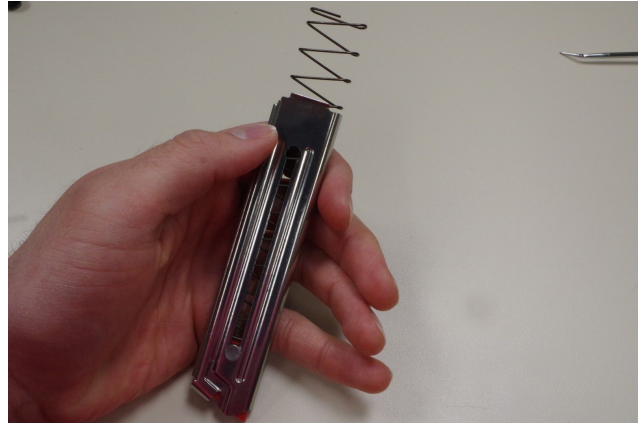
- Insert the new follower, being sure that the direction the sloped edge of the follower is pointing matches the direction the sloped top of the magazine faces.



- Re-insert the follower button. Be sure to re-insert it into the correct side (the side with the countersink around the smaller hole that the peg on the follower button fits into.) If you don't, the follower will not be able to slide at all.



7. Re-insert the spring, pushing the follower all the way to the top of the magazine. Then insert the pick into the coils of the spring and pull towards the follower until the entire spring is inside the magazine. Hold the pick in place there.



8. Slide the base pad back onto the end of the magazine. Remove the pick. Slide the follower button up and down a few times to ensure that everything moves the way it's supposed to and that the spring is seated on the base pad correctly.

